



PRESS RELEASE

Published on 1. 1. 2018

BEDNAR Introduces New Products for 2018

The new machines for 2018 are: OMEGA OO 8000 L and OO 9000 L seed drills, universal VERSTILE VO 6000 and VO 7500 cultivators, SWIFTER SO 5000 L and SO 6000 L seedbed cultivators, FERTI-CART FC 3500 hopper for fertiliser, TERRASTRIP ZN 8R/45, 50, 75 chisel ploughs and the ATLAS AE 12400 stubble cultivator

OMEGA OO _L: Precise seed placement, low weight, easy adjustment

OMEGA OO _L: Přesné uložení osiva, nízká hmotnost, jednoduché nastavení

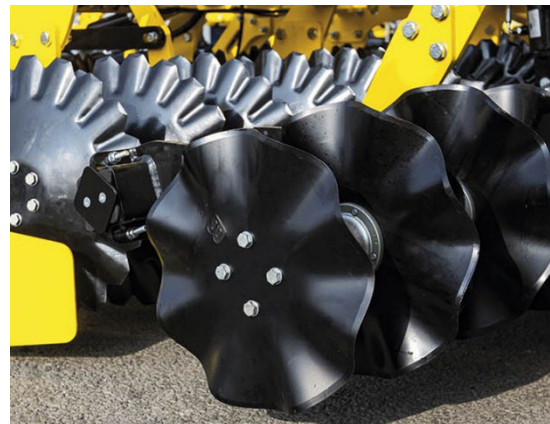
OMEGA OO8000L and OO9000L are wide, versatile seed drills of a light design, with a large hopper and a capacity of 4,000 litres and disc soil cultivation that provides for seeding of various types of crops with an inter-row spacing of 12.5cm or 16.5cm and a wide range of seeding quantity, both in the conventional and minimizing soil cultivation systems. The layout of the individual working parts provides for unique and unrivalled seedbed preparation in combination with precise seed placement, low weight and easy settings.

The work discs are laid out in an X shape so that the machine works precisely behind the tractor.

Thanks to the PSP system (Precise Seed Placement), the drill coulters place seeds at an identical seeding depth along the width of the machine and perfectly trace any terrain unevenness in the lengthwise and crosswise axis.



The OMEGA OO_L seed drill has "X"-shaped disc sections, ensuring precise tracking of the tractor by the seed drill.



Coulter section for cultivation, also in moist conditions

VERSATILE VO: Intense soil mixing and soil profile undercutting

VERSATILE VO is a ploughshare cultivator that excels in its versatility. We have designed this machine so that it can be used for various field work from spring to late autumn. The simple frame of the machine is based on 5 rows of ploughshares – laid out so that the machine is maximally permeable while mixing the top layers of soil intensely and undercutting the entire soil profile.



VIBRATION SHARES for seedbed preparation and stubble cultivation in light sandy soils



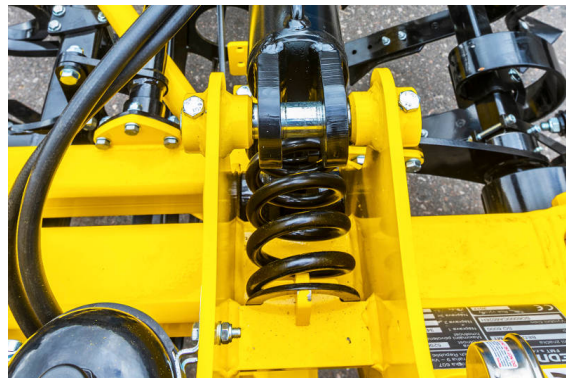
Shares with NON-STOP protection for seedbed preparation and stubble cultivation up to 15cm in heavier conditions

SWIFTER SO_PROFI: Working at high speeds

SWIFTER SO_PROFI is a modern type of a seedbed cultivator that prepares the field for seeding in a single pass. A great advantage is the overall spring mounting of the working frames using a patented system that allows working at high speed – up to 15km/h. The new feature of the Swifter is the option to use the finish cross-kill for better consolidation of the seedbed.



The finish cross-kill is the third cross-kill in the Swifter SO_PROFI series. Sugar beet growers demanded this solution for better final consolidation of the seedbed just before seeding.



The working frames of the Swifter SO_PROFI sections are spring-mounted using springs between the side frames and the main frame. This patented solution allows working with the machine at high speeds of up to 15km/h.

FERTI-CART FC: Precise placement of fertiliser, easy manipulation

FERTI-CART is a pressurised supply tank primarily designed for direct application of fertilisers into soil horizons. We have designed it so that it is most convenient for work and manipulation with solid fertilisers.

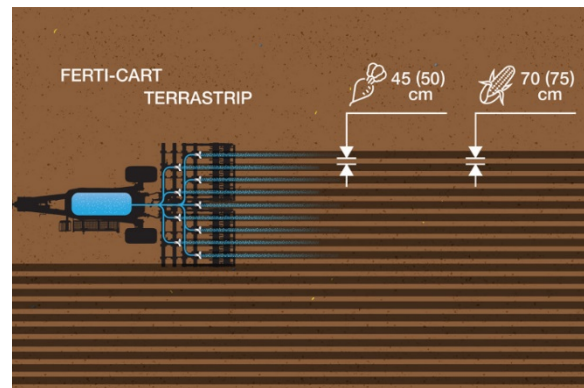
FERTI-CART is made from plastic and the outlet has a large gradient thanks to which it is also possible to apply lower quality fertilisers. The main use of the supply tank allows for the connection of other machines for soil cultivation: such as a Terraland, TerraStrip or Fenix. The tank is pressurised in order to increase batch accuracy, namely in fertilisers with more demanding distribution.

TERRASTRIP ZN: Efficient soil cultivation that reduces costs

TERRASTRIP is a chisel plough which processes soil in strips where row crops such as maize, sunflower, sugar beet etc. grow. The ploughshare spacing is 70cm and 75cm for maize and sunflower, 45cm and 50cm for sugar beet. We recommend adding profile fertilisation to loosening directly into the root zone of plants. The loosened and fertilised strips create an ideal environment for a rich root system. Effective and target-oriented soil cultivation reduces the costs while increasing the yield of the individual row crops.



FERTI-CART FC3500 in combination with a TERRASTRIP ZN/8R



We recommend adding profile fertilisation to loosening directly into the root zone of plants

ATLAS AE: Stubble cultivator for high daily outputs, even with high concentration of crop residue

ATLAS AE is a mounted wide stubble cultivator with a short frame, designed for high daily outputs and cost savings thanks to the wide coverage of the machine and high working speeds. The main advantages of the machine include the X-shaped disc lay-out, which prevents the machine drifting, and the installation of the transport axle before the work discs. This solution eliminates rocking of the machine during work. ATLAS AE excels in fast and easy turns at the headland thanks to the front rotary wheels and the rear packers. The machine design also provides for easy and safe transport on roads.

**Would you like to order a demonstration of new machines
in advance or ask any questions?**

Contact us.