

SLASHING

**BEDNAR**

# MULCHER MO, MZ, MM

Area output  
incorporating quality



**JOY**  
OF FARMING





MULCHER MZ

## Why the MULCHER?

BEDNAR MULCHER'S are robust rotary cutters that come in 3 different models, which were developed for the most difficult of grassland maintenance and for the mulching of vegetal remnants on arable land. The Mulcher is designed to achieve the maximum crumbling of grass, vegetal residue, bushes and young trees while still maintaining a long lifespan.

BEDNAR rotary cutters are available as a single-rotor MO, triple-rotor MZ and the five-rotor MM cutters. All types are equipped with four blades on a rotor and are equipped with

a large amount of protective and safety components (zinc coating, ironing, strengthening of the top rotor section, rotor casing and a freewheel clutch or friction coupling). All of these ensure quality labour in the harshest conditions. All of the safety components stem from our long term experience and testing. Blades at 1000rpm operate at a speed of 312km/h, and if the bottom part is continuously exposed to stones and rock being thrown up, it can be damaged. It is for this reason that we have designed this section with iron plating that enables you to safely work the machine in the most difficult of conditions for an extended period of time.

### MAIN ADVANTAGES OF THE MACHINE

- Rigid solid frame for coping with extreme seasonal output.
- Zinc coating of the main components of the machine strengthens resistance to multiple hazards such as climatic impact and vegetal juices.
- Iron plating of the bottom section of the rotary cutter protects the machine against puncture damage caused by stones etc.
- Spreading plates ensure the elimination of vegetal clustering of the mulched material.
- Front counter blade improves the quality of mulching on grassland as well as on arable land.
- Choice of grass or maize blades, intended for arable land crops such as maize, sunflowers etc.
- Swinging axle facilitates driving over uneven fields.

### AGRONOMIC ADVANTAGES OF THE MACHINE

- Quality mulching of grassland and vegetal remnants on arable land.
- High crumbling effect of the machine = easy and fast disintegration of mulched material.
- Even spreading of mulched material.
- Easy embedding of mulched vegetal residue = higher quality of machine labour for soil cultivation.
- Effective combating of the European corn borer due to the elimination of dormancy conditions = saving costs on chemical repellents and an increase of the yield by reducing damage levels.
- Use the machine within the conventional farming system (after ploughing) and in the minimization system.
- Extending and maintaining production areas due to the easy mulching of bushes growing along the edges of fields and pastures.
- Meeting required agricultural deadlines = the design of the machine allows for quality production even at high speeds.



# Why mulching?



## STUBBLE MANAGEMENT

To achieve quality stubble cultivation that enables a fast decay of the after-harvest residue, growth of seeds that fell out from the previous harvest and an excellent preparation of the seedbed for following crops, quality mulching of vegetal residue is important. Swift decay of vegetal residue is one of the basic foundations for establishing future growth. Vegetal residue cut to a length of 3–5cm decay faster and all of the further working steps are easier with better results, which means lower costs and a higher yield. The time between harvest and field preparation for winter crops is shortened due to increasingly unpredictable weather conditions. That is why the daily output is more important than ever. It is this feature that truly makes every single model of the Mulcher machine range excel.



## REDUCTION OF FUEL COSTS

The combine can leave a higher stubble field allowing for higher speeds that save up to 40% of fuel consumption.



## INCREASING COMBINE OUTPUT

Combines can leave a higher stubble field, which means the processing of a smaller amount of material = lower combine wear. The stubble field will be further processed by the BEDNAR rotary cutter, which allows for an increase of up to 50 % of the combine output.

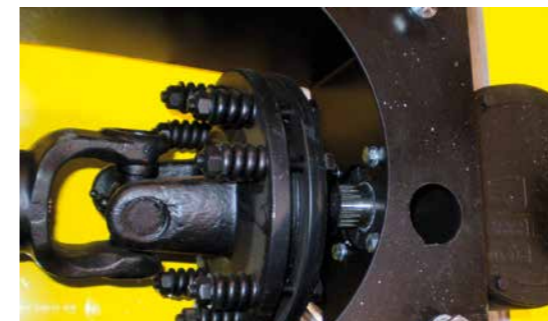


## SOIL PROTECTION

Quality disintegration of maize remnants eliminates a portion of the European corn borer larvae, and it prevents the dormant hibernation of those remaining. This system saves costs on further chemical treatments and provides you with the ideal conditions for a higher yield.

## HIGH LEVEL OF PROTECTION, HIGH LEVEL OF USER COMFORT

An important component of all BEDNAR rotary cutters is that a large amount of the design components provide safe machine operation and high user comfort level. The simple construction characterises the MO, MZ and MM rotary cutters, this design is the perfect foundation for a long lifespan of the machine. This is extended even further by the zinc-coating on the surface. This provides excellent shielding against the elements and acidic vegetal juices. Not only is every rotor fitted with safety components, but also the propeller shaft between the rotary cutter and tractor has the same equipment. The only exception is the single-rotor rotary cutter which is protected by a friction coupling against overloading, and also against a mass transfer of force during after-run. Additionally every rotor is protected with a case at the bottom section, which enables you to operate the machine at a very low working height.



## GEAR BOX PROTECTION

The BEDNAR rotary cutter gear components are protected against damage (collisions, e.g. with stones etc.) with the help of a friction coupling that automatically halts all gear processes. The propeller shaft of each rotor is equipped with a friction coupling.



## TRACTOR P. T. O. PROTECTION

The MZ and MM rotary cutter propeller shaft comes equipped with a freewheel clutch (MO-friction coupling) that prevents the transfer of the twist moment to the tractor from the back, and this in turn protects the P. T. O. from damage caused by a sudden reduction in rpm of the tractor engine.



## DIRECT GREASING = EASY MAINTENANCE

All P. T. O. shafts on the BEDNAR rotary cutters are equipped with direct greasing. The lubrication point is placed in the centre of the P. T. O., from which point the lubricant can reach the whole of the P. T. O. This results in comfortable, fast and easy maintenance.





MULCHER MZ

# MULCHER MZ

## Triple-rotor rotary cutter

### MACHINES FOR HARD LABOUR

The triple-rotor model the BEDNAR Mulcher MZ 4500 and 6000 are amongst the most popular rotary cutters of their kind in Europe. Working widths 4.6 and 6 m guarantee a high daily output at low operation costs. The rugged construction of the body with a zinc-coated surface enables the maximum deployment of the machine in the most challenging farming conditions.

### HIGH RESISTANCE AND SAFETY

One of the biggest advantages of the BEDNAR rotary cutters is the complete zinc-coating of the machine bodies, this significantly prolongs the machines lifespan. Machine bodies are submerged in a zinc bath, which allows for complete protection of the external surface area and the internal plate sections. This way the machine is shielded against vegetal juices, climatic impact, stone missiles, that can quickly cause damage to the paint and lead to rusting. These threats are eliminated with zinc-coated surfaces as a result of the permeation of the zinc and the plate.

### MAIN ADVANTAGES OF THE MACHINE

- High labour productivity.
- High levels of resistance of the machine and work safety.
- 2 blade types for multipurpose usage.
- Perfect contouring of the surface.
- Wide range of equipment.
- Easy handling.

#### FRONT COUNTER BLADE



To increase the crumbling effect of the front parts of the mulching zone, they have been equipped with counter blades that complete the cutting of the mulched material. The quality of the mulched material is therefore increased.

#### SPREADING PLATES



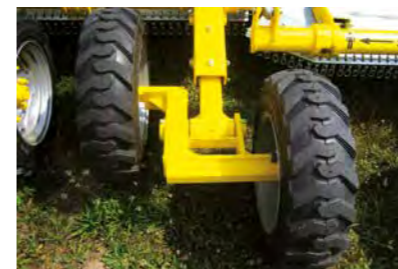
Perfect machine work is ensured by plates that evenly spread the mulched material over the field. Vegetal clusters are not formed, etc.

#### IRONING



Rotary cutters are fitted with exchangeable iron plates preventing damage. Furthermore every rotor is protected with a rotor case, which allows for it to work at very low heights off the field.

#### SWINGING AXLE



A central swinging axle helps to overcome uneven surfaces whilst maintaining working height. Thanks to the axle the machine is able to operate smoothly even on extremely rough fields and pastures.

#### EVEN FUNCTION IN A VERTICAL POSITION



The wings of the MZ and the MM rotary cutters work on a swinging arm and perfectly track unevenness of mulched fields from  $-15^\circ$  to  $+45^\circ$ . The machine can be used with the side positioned at  $+45^\circ$  therefore can be used to clean road sides and along the edges of pastures and fields.

#### EASILY ADJUSTABLE MULCHING HEIGHT



The mulching height of the MZ and the MM machine is set centrally with the help of hydro clips on the hydraulic cylinder conduit of the machine's central axle. Adjustment of the setting is done swiftly and with ease.





MULCHER MM

# MULCHER MM

Five-rotor rotary cutter

## HIGH DAILY OUTPUT AT A LOW OPERATING COST

The wide width rotary cutter Mulcher MM 7000 is fitted with five rotors. The working width of the machine at 7m has been designed to deliver a high daily output. The construction and lay-out of the mulching device components ensure a high level of disintegration. Similar to the MZ and MO models, the machine has a zinc-coated surface and the option of ironing of the sub-rotor section. The MM 7000 model is ideally suited to larger farms, operators of biogas stations, airports and also contractors. The machine is able to reach a high daily output at a low operational cost.

## MAIN ADVANTAGES OF THE MACHINE

- High labour productivity thanks to the working width.
- High quality of mulching.
- Meets the needs of a huge daily output.
- Multi-purpose for use on grassland as well as on arable land.
- Zinc-coated machine body.
- Iron plating to prevent damage.

## MACHINE HOOK-UP



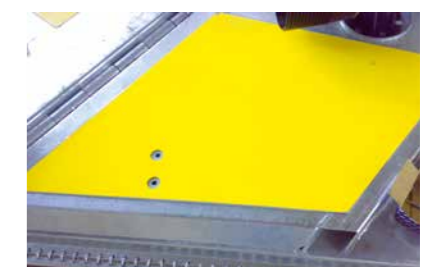
The MZ and MM rotary cutters are hooked up to the upper or lower tractor tow with a ring that has a diameter of 40, or 50mm in size leading on to a Scharmuller K80 tow.

## MORE TRAVELLING WHEELS



The MM 7000 rotary cutter comes as a standard 8 wheel model. The MZ rotary cutter comes in a standard 6 wheel model but can also be customised to come in an 8 wheel version. The wheels can be solid rubber to prevent puncture.

## NON-STICK PROTECTION OF THE SURFACE OF THE MACHINE



BEDNAR rotary cutters can be equipped with plates that cover the main frames. These plates are smooth and minimise sticking of the vegetal residue to the machine.





MULCHER MO

# MULCHER MO

Single-rotor rotary cutter mounted

## HIGH OUTPUT ON SMALLER ACREAGE

BEDNAR Mulcher MO is mounted with a single-rotor, rotary cutters for low-efficiency tractors (60 HP), which are manufactured with a working width of 2.25m. Thanks to the small dimensions (a width of 2.45m and a length of 3.05m), weight of the machine (750 kg) and hook-up to a 3-point linkage (cat. II.) the MO rotary cutter excels and can be manoeuvred with ease, that enables it to work in some very challenging terrain. Just like the MZ and MM the MO type also has a zinc-coated surface which substantially prolongs its lifespan. The machine can be customised with iron plating for safe operation in harsh conditions. Easy manoeuvrability in combination with a high output predetermined the machine to be used in those areas where accessibility is challenging whilst still requiring a steady high daily output despite the conditions.

## MAIN ADVANTAGES OF THE MACHINE

- Excellent manoeuvrability on rough terrain.
- Solution for smaller farms and forrest farms.
- Multi-purpose usage on grassland as well as on arable land.
- Zinc-coated machine body.
- Iron plating to prevent damage.
- Attachment of a category II. 3-point linkage.

## WORKING PARTS OF THE MODEL MO



The sub-rotor section of the MO machine is sold as those of the MZ and MM type, i. e. 4 blades per rotor, ironing, front counter blade and a spreading plate. The combination of these components ensures quality work in all conditions.

## EASILY ADJUSTABLE WORKING HEIGHT



The mulching height of the MO type is set with tractor arms, if needed on the rear support wheels with the help of a distance underlay.

## SUPPORTING WHEELS



MO rotary cutters can be equipped with rear support wheels that facilitate surface traction. At the same time they also help the tractor carry a part of the machine load.



# Important working parts

## EASY BLADE EXCHANGE ON ONE OR TWO LEVELS

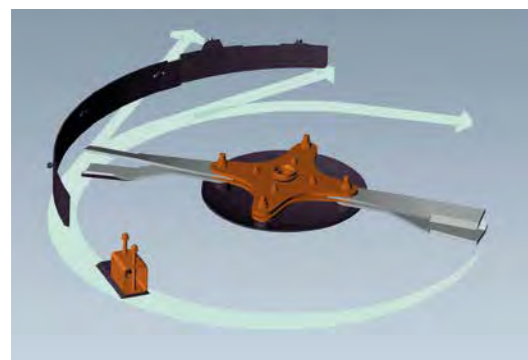
Not only ground for a high output but also for an exceptionally good cutting ability that is always formed by two pairs of wrought blades on each rotor. Long term experience of producing rotary cutters has shown us that it is not always suitable to use the same blade type for different kinds of plant species and vegetal residue. And that is the reason why you can use the Mulcher machines (with the exception of the MO type) with 2 types of cutting blades and 2 ways of positioning. This ensures the same quality of work in varying conditions. It is possible to use 4 paddle-shaped blades on one working level for permanent herbage. On the other hand it is more suitable to use the appropriately named maize blades on two levels for vegetal residue on arable land. The grass and maize blades can be easily exchanged. Adjusting the position of the blade level is also facilitated with the help of spacers. Allowing you to easily adjust mulching for the required crop.



### GRASS BLADES

Paddle-shaped blades positioned 'crosswise' at the same level are suitable for grassland mulching. Paddleshaped blades create suction, which lifts the crushed growth leftovers after tractor wheels have driven over it, and then mulches it.

Grass blades can be easily re-adjusted to maize blades and vice versa.



### MAIZE BLADES

The combination of the paddleshaped blades positioned on the underlying level with the straight blades on the upper level a double disintegration of persistent stems, e.g. maize, sunflower and rape. These are cut on two levels simultaneously.

Maize blades can be easily re-adjusted to grass blades and vice versa.

## TRASH-FAN CONTINUOUS MACHINE CLEANING DEVICE

Trash-Fan is a device for continuous cleaning of the machine surface. The main part of this device is a fan that creates a stream of air which is directed to the risk spots on the surface of the mulcher by wind straighteners. This device significantly saves costs of down time due to machine cleaning and also increases labour safety.



“We needed a mulcher that would mainly work on a corn stubble field. However, the machine has also proven useful for harvesting cereals and on meadows, of which we have a large area of. The machine has a very good daily capacity which was very important to us. Therefore, we consulted clients who used such machines before we purchased ours. Another advantage is the low fuel consumption when converted to a processed hectare.”

GR Adkonis  
Kwakowo koło Stupska, Pomeranian Province,  
Poland 870 ha | MULCHER MM 7000



# Important working parts



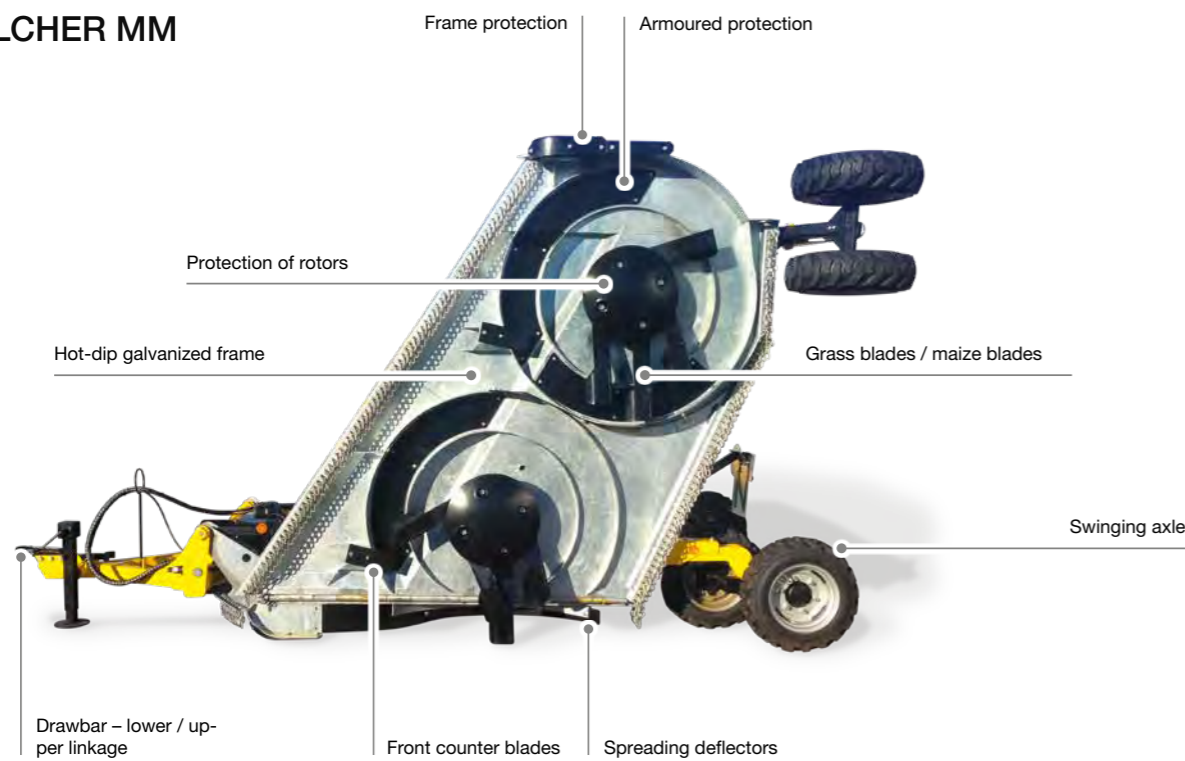
## MULCHER MZ



## MULCHER MO



## MULCHER MM



## MULCHER

		MO 2500	MZ 4500	MZ 6000	MM 7000
Working width	m	2.25	4.5	6	7
Transport width	m	2.45	3	3	3
Number of rotors	pcs	1	3	3	5
Number of blades per rotor	pcs	4	4	4	4
Input speed	1/min	540	540/1 000	1 000	1 000
Total weight*	kg	680	2 700	3 300	3 500
Recommended output**	HP	60-80	120-140	150-200	200-220

\* depends on equipment \*\* depends on soil conditions



# I did maximum for more yield this year

## soil cultivation



**STRIEGEL-PRO**  
Harrows



**SWIFTERDISC**  
Disc Cultivators



**ATLAS**  
Disc Cultivators



**SWIFTER**  
Seedbed Cultivators



**FENIX**  
Versatile Cultivators



**TERRALAND**  
Chisel Ploughs



**CUTTERPACK**  
Trailed Packers



**PRESSPACK**  
Trailed Packers



**TERRALAND DO**  
Cambridge Packers

## seeding and fertilizing



**OMEGA**  
Seed Drills



**FERTI-BOX**  
Hopper for Fertilizer



**ALFA DRILL**  
Seed Hopper

## inter-row cultivation mulching



**ROW-MASTER**  
Inter-row Cultivator



**MULCHER**  
Rotary Cutters

**BEDNAR FMT, s. r. o.**  
Lohenicka 607  
190 17 Praha-Vinoř  
Czech Republic



Your Authorized Dealer



EUROPEAN UNION  
European Regional Development Fund  
Operational Programme Enterprise  
and Innovations for Competitiveness

info@bednar.com  
www.bednar.com



\* M A O O O 4 2 \*